



Ymddiriedolaeth GIG Gogledd Cymru
North Wales NHS Trust

15 Rhagfyr, 2008

DATGANIAD I'R WASG **YSTAFELL CHWARAE YNG NGLAN CLWYD YN CAEL EI GWEDDNEWID YN BROFFESIYNOL**

Y mis hwn, mae ystafell chwarae'r plant yn Ysbyty Glan Clwyd wedi cael ei gweddnewid, diolch i raglen teledu S4C "Hip neu Sgip", a gynhyrchir gan gwmni Fflic.

Mewn dim ond 3 diwrnod, mae tîm Fflic, dan arweiniad y cynllunydd cartref, Leah Hughes o Ruthun, wedi trawsnewid yr ystafell chwarae tu ôl i ddrysau caeedig, cloëdig iawn. Ddydd Gwener, 12 Rhagfyr, agorwyd y drysau'n swyddogol i ddatgelu ystafell chwarae 'hudol' ac arbennig. Dathlwyd yr achlysur gyda chanu carolau a pharti Nadolig. Roedd y plant wrth eu bodd gyda'r ystafell.

Derbyniodd Fflic gefnogaeth arbennig, nid yn unig gan ei riant gwmni Boomerang, a roddodd gefnogaeth ariannol, ond hefyd gan gwmnïau lleol a roddodd gymaint tuag at yr achos. Mae'n hwn wedi cyfrannu deunyddiau, teganau a gemau at y prosiect.

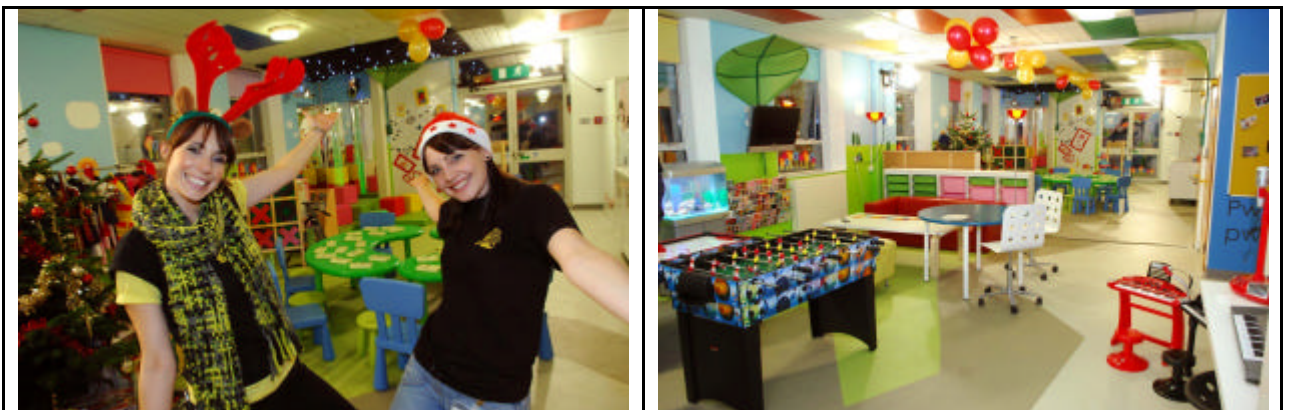
Iona Davies, Rheolwr yr Howsgiperiaid yn yr Ymddiriedolaeth, gysylltodd â'r rhaglen. Cafodd y syniad wrth wyllo'r rhaglen Hip neu Sgip yn trawsnewid ystafell wely plentyn. Roeddent yn barod iawn i fynd i'r afael â'r ystafell chwarae ac i wneud y dasg yn rhaglen arbennig ar gyfer y Nadolig.

Dywedodd Gwenda Griffith, Rheolwr Gyfarwyddwr Fflic:

"Dyma brosiect cyffrous i fod yn rhan ohono. Nid oes ffordd well o ddatlu'r Nadolig na thrwy roi anrheg i blant yng Nglan Clwyd a fydd yn dod â phleser drwy gydol y flwyddyn."

"Ni allwn ddiolch digon i Hip neu Sgip. Bu gweithio gyda thîm Fflic yn brofiad pleserus, ac er i ni ddweud yr hyn yr hoffem weld yn ein hystafell chwarae, mae'r hyn a gawsom wedi mynd y tu hwnt i'n disgwyliadau. Mae'n wych. Mae'n olau, lliwgar, yn defnyddio bob mathau o dechnoleg fodern ac yn hollol ddiogel i blant. Ar ran yr Ymddiriedolaeth a'r holl blant a fydd yn defnyddio'r ystafell chwarae am sawl blwyddyn i ddod, hoffwn ddiolch o waelod calon i chi, nid yn unig i dîm Hip neu Sgip, ond hefyd yr holl gwmnïau a gyfrannodd y deunyddiau adeiladu, dodrefn a theganau." Mae eu haelioni wedi bod yn aruthrol, ac rydym yn hynod ddiolchgar."

Darllidir y rhaglen ar S4C ar Noswyl Nadolig am 5pm.



Yn y llun mae Cyflwynydd Hip neu Sgip, Alex Jones, a Leah Hughes, Cynllunydd, yn yr ystafell chwarae newydd.

15 December, 2008

PRESS RELEASE
**CHILDREN'S PLAY ROOM AT GLAN CLWYD GETS
A PROFESSIONAL MAKE-OVER**

This month, the childrens' play room at Glan Clwyd hospital has had a make-over, courtesy of the S4C TV programme "Hip Neu Sgip", produced by Fflic productions.

Over just 3 days the Fflic team, led by interior designer Leah Hughes from Ruthin, transformed the playroom behind closed, and very locked doors. On Friday, 12th December they threw open the doors to a truly spectacular 'magical' playroom. The occasion was marked by carol singers and a Christmas party, and the room was an instant hit with all the children.

Fflic received tremendous support from not only their parent company Boomerang who provided financial support, but also local companies who rallied to the cause. They have all donated materials, toys and games to the project.

The idea for the makeover came from Iona Davies, Housekeeping Manager in the Trust, who, having watched Hip Neu Sgip makeover a child's bedroom, contacted the programme. They readily agreed to tackle the playroom, and to make it their Christmas special.

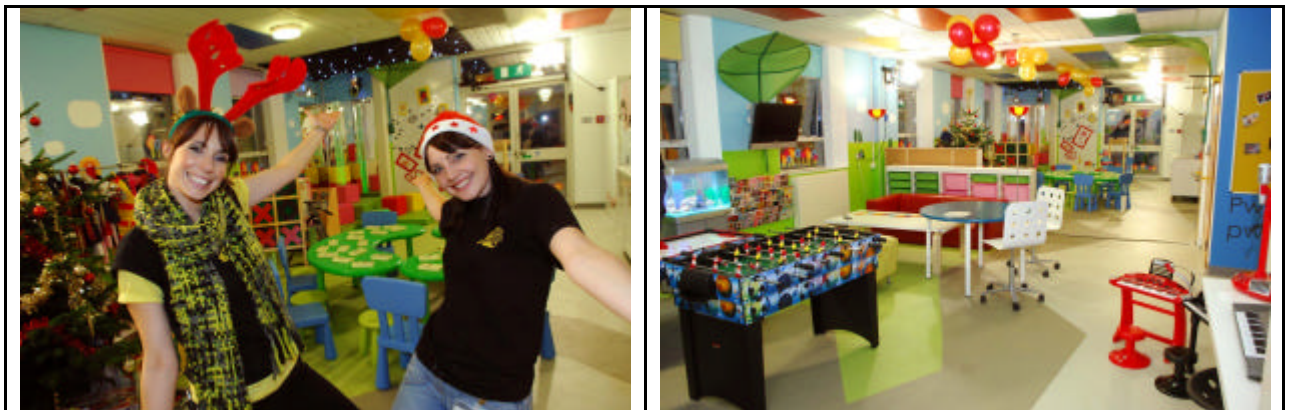
Gwenda Griffith, Managing Director of Fflic said:

' This is a very exciting project with which to be involved. There can be no better way of celebrating Christmas than by giving the children at Glan Clwyd a present which will bring pleasure throughout the year.'

Dr. Peter Stutchfield, Clinical Director for Family Services said:

"We can't thank Hip neu Sgip enough. Working with the Fflic team has been a enjoyable experience, and although we told them what we would initially like to see in our playroom, the finished product went beyond all our expectations. It's wonderful. Bright, colourful, very high-tech employing all sorts of modern technology, and totally child-friendly. On behalf of the Trust, and all the children who will use the playroom for many years to come, I would like to say a big thank you, not only to the Hip neu Sgip team, but also all the companies who have kindly donated the building materials, furniture and toys. Their generosity has truly overwhelmed us, and we are extremely grateful."

The programme will be screened on S4C on Christmas Eve at 5pm.



Photographed are Hip neu Sgip Presenter, Alex Jones, and Leah Hughes, Designer, in the new playroom.

~ ENDS ~

For further information contact: Mrs. Dawn Davies at Glan Clwyd (Tel: 01745 534495) or Andy Scotson at Wrexham Maelor (Tel: 01978 725130)